

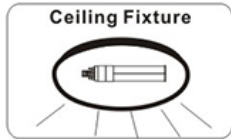
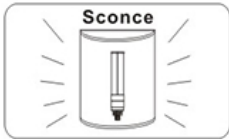
**LED**  
TECHNOLOGY

**50,000 Hours Life, 10Watt, Fluorescent Ballast**

### Applications:

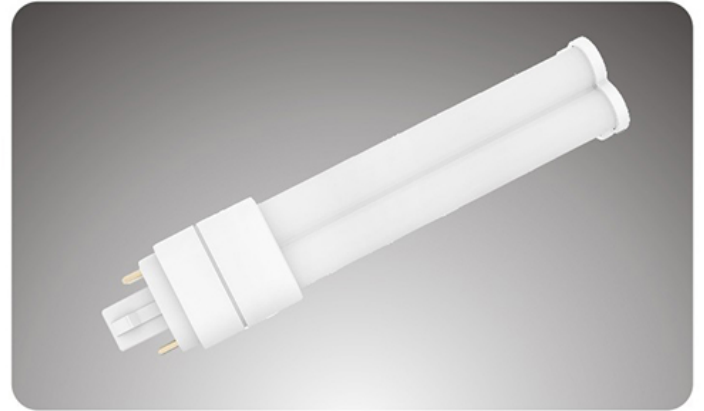
*Indoor & Damp Locations, Fluorescent Fixtures & Sconces*

- Replace 13W, 18W and 26W 4 Pin CFL Lamps with 10W LED
- Operates On Existing Fluorescent Electronic Ballast



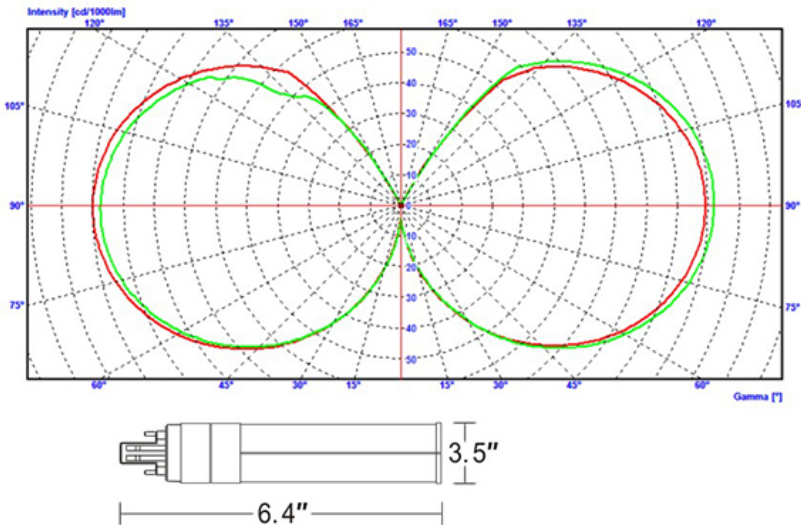
### Features:

- Replace Existing Electronic 13W 18W, 26W CFL Bulb
- Instant On, High Power LED Bulb
- Rated Life Of 50,000 Hr
- Contains No Mercury
- No UV or Infrared Radiation
- Use with Electronic Fluorescent Ballast (Type A) Plug-N-Play

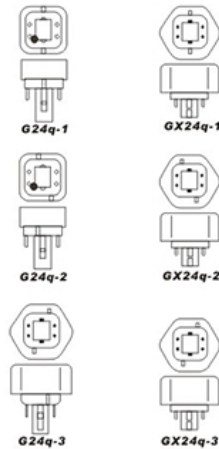


### Specification:

Input : .....	Fluorescent Ballast
Input Power .....	10W
Input Line Frequency .....	60Hz
Lamp Life (Rated) .....	50,000hrs
Minimum Starting Temp .....	-20°C/-4°F
Maximum Operating Temp .....	40°C/104°F
CCT .....	2700K/4000K
CRI .....	≥80
Lumens .....	1250
CBCP .....	135
Beam Angle .....	280°



### Fits Following Bases



**WARRANTY**  
**1-YEAR\***

6/23/2023-  
Warm White is  
not yet available  
but will be in  
the future

Model:#	Description	Wattage	Lumens	Fits Socket
LB11PL-H/WW	4 Pin LED Bulb Warm White (Type A) Plug-N-Play	10W	1250	G24-q1 Base G24-q2 Base G24-q3 Base
LB11PL-H/CW	4 Pin LED Bulb Cool White (Type A) Plug-N-Play	10W	1250	GX24-q1 Base GX24-q2 Base GX24-q3 Base

\* 1 Year Limited Warranty  
Warm white available in future

UPC: LB11PL-H/WW 793573-749376  
LB11PL-H/CW 793573-749383

